

_pozitionare

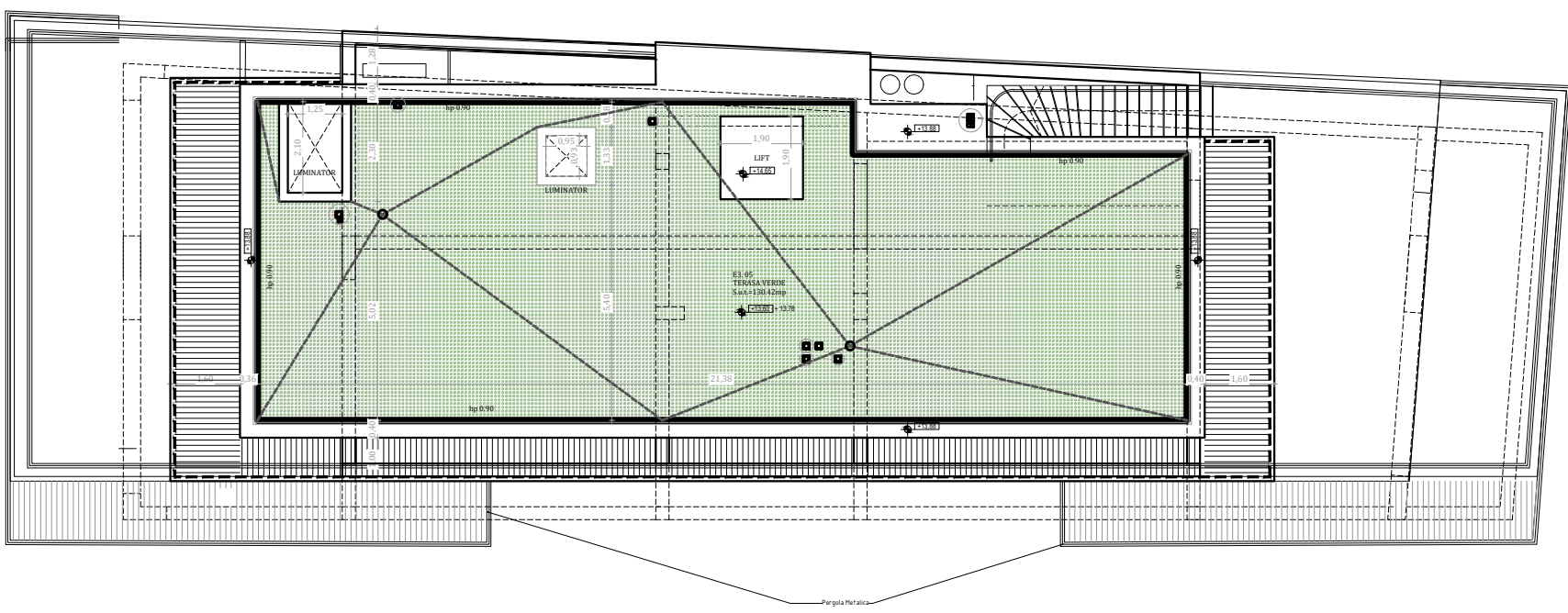
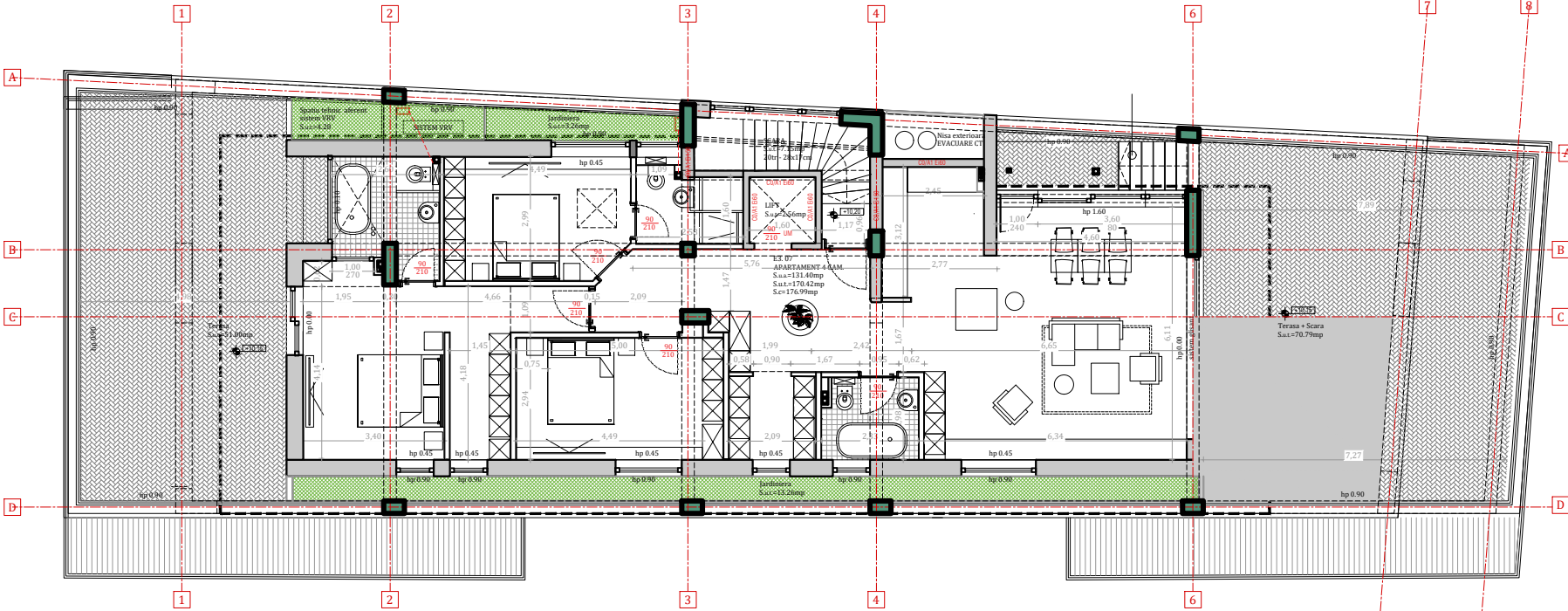
N



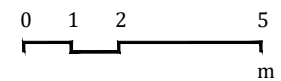
_NIVEL ETAJ3

A07

E3 Apartament 07		
	FUNCTIUNE	SUPRAFATA (mp)
1	Vestibul/Hol	17.72
2	Living + Bucatarie	42.97
3	Dormitor 1	14.64
4	Dressing 1	4.18
5	Baie 1	4.44
6	Dormitor 2+Dressing	23.58
7	Baie 2	6.38
8	Dormitor 3	12.92
9	Baie 3	4.56
	Suprafata utila locuabila	131.40
10	Terasa 1	51.00
11	Terasa 2	70.79
12	Jardiniera 1	3.26
13	Jardiniera 2	13.00
14	Spatiu tehnic sistem VRV	4.28
15	Terasa verde	130.42
	Suprafata utila Totala	273.75
	Suprafata construita	176.99
	Suprafata constr. Totala	315.06



_scara grafica



NOTA*

- sistemul de cotare este conform cu STAS 1434-83 corelat cu STAS 4908-85
- toate dimensiunile sunt in cm. si pot suferi modificari de aprox. 5% din executie
- mobilierarea este cu titlu orientativ